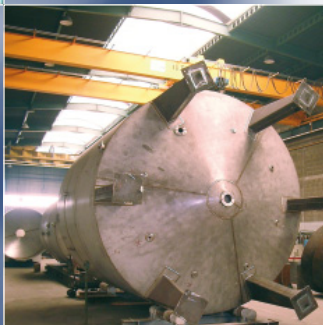


DENIS somain



**Your partner in
projects realisation
Design & implementation**

DENIS - SOMAIN
ZI de Monterrat - B.P. 13
42501 Le Chambon-Feugerolles
c e d e x F R A N C E
Tél : +33 477 405 430
Fax : +33 477 405 431
Web : www.denis-somain.com
E-mail : mail@denis-somain.com

DENIS somain

The DENIS-SOMAIN company designs, manufactures and installs turnkey delivered industrial systems, in full or in part.

A sheet metal works based near Saint-Etienne arranged over a covered area of 10 000 m², DENIS-SOMAIN employs 120 staff.

Our workshops, spread over 5 halls with an under hook height of 8.50 metres, are fitted with the following equipment:

- An oxygen cutting unit,
- A 5200 W laser cutter,
- An automatic welding column and boom,
- Digitally controlled bending machines,
- Rolling machines,
- Presses,
- A lifting capacity of 30 tonnes,
- Punching machines,
- A mechanical workshop (lathes, milling machines, drilling machines),
- An automation workshop,
- A hydraulic workshop,
- A 25-tonne automotive crane.

Our survey department of 12 people designs the solutions you need.

We uphold a tradition of quality, and our company is ISO 9001 2008 version certified. This certification guarantees the quality of our productions and the monitoring of our provisioning and distribution channels.

We are continuously improving our design and manufacturing processes in order to provide a complete and optimised service.

Whether you need manufacturing, a survey or a complete service, you will find DENIS-SOMAIN to be a valued partner to see your projects through to completion.

5 halls : 10 000 m² indoor



Design & implementation Turnkey delivery



EURO-QUALITY SYSTEM



ISO 9001
VERSION 2008

Design & Automation

Automatic handling

Heavy load handling

Automatic industrial truck for loading, transferring and unloading coils.



Automatic truck for transferring and loading 11-tonne steel coils. (ARCELOR MITTAL)

Automated transfer

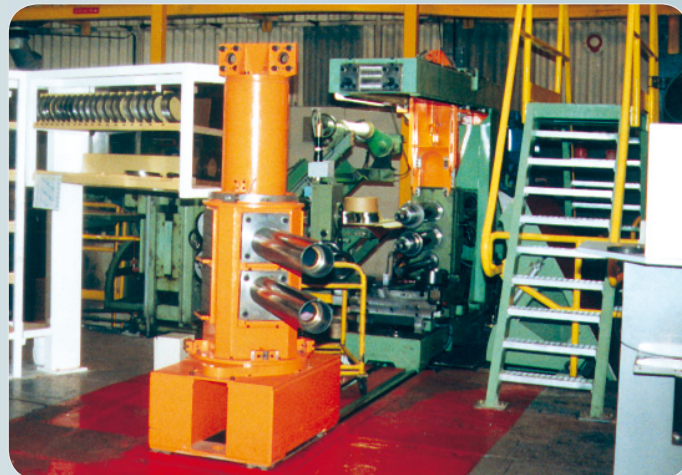
Set of automatic trucks for transferring coils between pickling lines and packing via control points



Automatic transfer truck for steel wire coils (UGITECH)

Production line optimisation

We research and supply custom solutions for mechanising and securing work stations.



Automated slitting line tool changing (ARCELOR MITTAL).

Automatic handling

Conveyors



Steel wire coil circuit (ACOR)

Automated handling systems consisting of motorised roller tables, tippers and pivoting table transfers. Storage performed by a truck with lifting tray.

Special conveyors

Installation of belt or roller conveyors for handling various equipments or materials.

These conveyors transfer, turn over, ream pack and load products.



Brick conveying and handling. (IMERYS STRUCTURE)

Tipper

DENIS-SOMAIN designs handling equipment for products of all sizes.

- Turnover machines
- Tippers
- Stackers
- Stockers



Heat treatment output (UGITECH)

Industrial sheet metal work

Hoppers & Vats

Receiving hoppers and storage vats in steel, stainless steel or aluminium for powdery, liquid, granular or pasty products.

Design calculations in accordance with EN or ASME. Third party approval: (APAVE, SOCOTEC, DNV...).

Surface coating: sanding, epoxy paint or polyurethane protection, zinc metalizing, or special coatings on request.



Ageing vat (TOTAL)

Storage silos



6 Silos Ø 2500 mm capacity 50 m³ (CAMPENON)

Standard free-standing silos, Ø 1800 to 3600 mm or according to your specifications on metal frame or bearing skirt.

Single-piece manufacturing in the workshop up to Ø 5000 mm for a volume of 400 m³ and on site up to 1500 m³.

Materials: carbon or stainless steel or combined with composite materials.

Turnkey installations with mechanical or pneumatic handling.

Pressure vessels

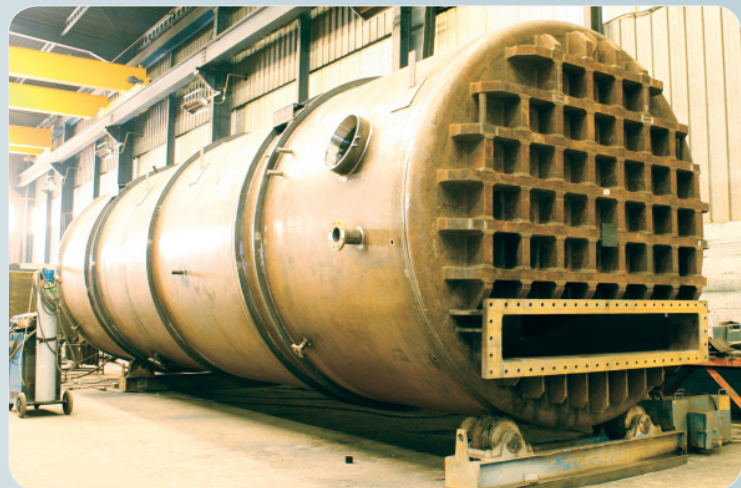
Manufactured in accordance with DESP or other codes (ASME, ASIT).

Shells from 3 to 30 mm thick, in carbon steel or stainless steel.

Design calculations and information folders approved by notified bodies (APAVE, DNV).

Welders qualified for all positions in accordance with NFEN 287-1.

Hydraulic testing workshop.



Pressure steriliser Ø 2400 mm - volume 70 m³ approved in accordance with DESP (ACB HYDROLOCK)

Large-sized parts

Retrofitting



Beauchastel lock gate, 12 metres high (Rhône)

We refurbish small and large-sized industrial units:

- Disassembly
- Surveys
- Compliance
- Workshop manufacturing
- Reassembly

Industrial furnaces

Manufacture of large-sized parts, custom-made or following a customer's list of specifications.



Industrial furnace with refractory fibre lining (SERMAS).

Wind tunnels



104-tonne wind tunnel for testing Formula 1 car aerodynamics (LIGIER)

Specially-shaped fabricated part for directing a continuous flow of air without turbulence into the test section.

Prefabricated in our workshops then assembled on site.

DENIS-SOMAIN produced a 400-tonnes wind tunnel in this way for the BENETTON stable.

Bulk product storage

Flat-bottomed silos & hoppers with extractor

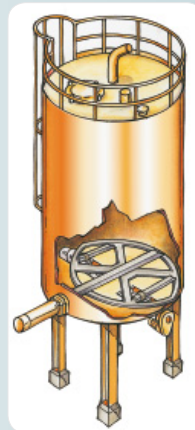
For all products that are hard to extract: dehydrated mud, animal meal, various waste products, pasty products...

Steel or stainless steel silos, concrete hopper with sliding extraction frame in carbon steel or stainless steel.

Surveys, implementation, assembly and starting-up. Turnkey installations delivered with peripheral handling equipment (extraction screws, pumps, hydraulic power plants...).



○ Twin silos, 2 x 240 m³ with building extension (ADISSEO).



○ Offshore viscosification pilot module (TOTAL ANGOLA)

Turnkey units

DENIS-SOMAIN builds turnkey units for all sectors of the offshore and onshore industry, chemistry, cement works, environment...

Complex frameworks handled (customer specifications, applicable standards, French or foreign regulations). Contract management and information folders in English.

Mixers & Dryers

Horizontal rotating tub mixers. Filling and emptying by Archimedes screw: quick, even mixing. Integrated discharge. Stainless steel model Ø 1000 to 3000 mm, 304L or 316L.

Twin shaft fluid-bed dryers. Capacity of 1 to 3 tonnes according to customer's list of specifications.



○ Inside of a mixer



○ Twin shaft dryer

Towed machinery



Mobile air control tower with access pod (TWIST)

Mobile control tower

Designed and developed for the TWIST company, this mobile tower can reach a height of 14 metres and makes it possible to provide a flexible air traffic control service that can be brought into operation quickly.

In folded down position, the mobile tower is compatible with air and road height restrictions, meaning it can be quickly transferred to operational sites.



Special trailers

Trailers, tank trailers (50 or 80 m³) and acid tank trailers designed for transporting hydrochloric acid, mobile transport and acid mixing units built to customer specifications.

Equipment approved for road transport.



50 m³ tank trailer (BJSP)

Banana trailers

Equipment designed for transporting powdered products on the road and all public highways.

Made of steel with a capacity of 27 and 35 m³

Self-contained piece of equipment with compressor, piping, valves, hoses...



Banana trailer 27 m³ (OIES)

INTERFACE® resin

Ultra-effective and reliable.

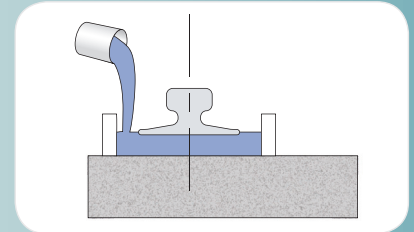
DENIS-SOMAIN sells and implements an epoxy resin for precision chocking for machines, rails, frames, mills, presses, rams, rolling mills, etc. ...

In certain cases, to remove the need for sealing, DENIS-SOMAIN has perfected a technique for gluing equipment to concrete floors.

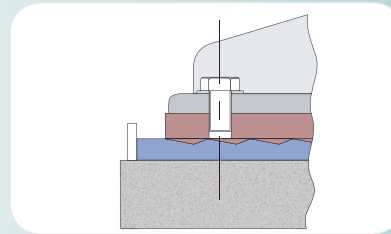
INTERFACE® is also used to reinforce structures and concrete blocks.



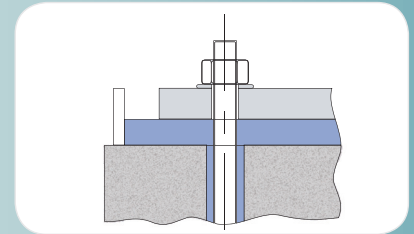
Chocking



Gluing



Sealing



Different uses of INTERFACE® resin

Metal structures

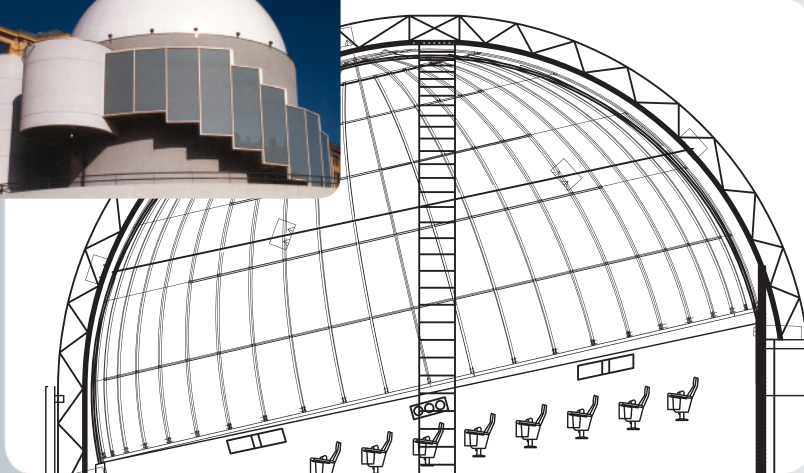


Diagram : Cut sight of Rennes planétarium (Ø 15 m) [photo: planétarium of Saint-Etienne]

Planetarium domes

Modular metal domes with supporting frame.

Implementations of various sizes from 10 to 15 metres in diameter.

Maintenance footbridges optional.

Laser cutting



Laser Machine with its storage unit (capacity of 40 tonnes of sheet metal)

Precision and power

With 5200 Watts of power, this laser cutting machine can handle sheets of 1500 mm by 3000 mm made of:

- Carbon steel up to 25 mm
- stainless steel up to 20 mm
- aluminium up to 12 mm

It can cut square, rectangular or round section tubes.

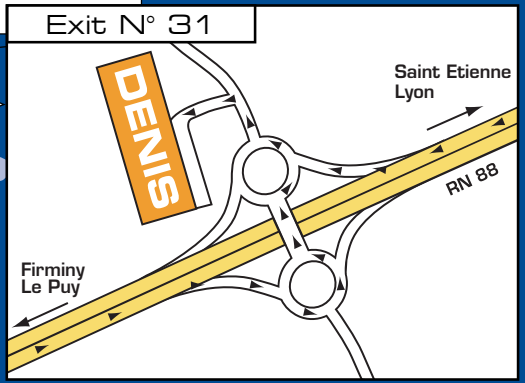
DENIS-SOMAIN is also equipped for oxygen cutting your parts with a maximum sheet size of 2000 X 8000 mm, up to a thickness of 70 mm for steel and 10 mm for stainless steel.

Our references

- ABB
- ACOR
- ADISSEO
- ALCAN
- ARCELOR MITTAL
- ASCOMETAL
- ATOCHEM
- BPB PLACO
- CALCIA
- CARBONE SAVOIE
- CGE
- CNR
- EDF
- ERAMET
- EUROCOPTER
- FCB
- FONDERIE
- FORGITAL
- HYDRO VEVEY
- HOLCIM
- IMERYS
- JORDAN PHOSPHATE MINES CO
- LAFARGE
- LE NICKEL
- MAROC PHOSPHORE
- METALLURGIQUE LE NICKEL
- MICHELIN
- OTV
- PUTZMEISTER
- RDF
- RHONE POULENC
- SNCF
- SNF FLOERGER
- SOLVAY
- SOLLAC
- TECHNIP
- UGITECH
- VALLOUREC
- VICAT

Access

DENIS - SOMAIN
 ZI de Monerrat - B.P. 13
 42501 Le Chambon-Feugerolles
 c e d e x F R A N C E
 Tél : +33 477 405 430
 Fax : +33 477 405 431
 Web : www.denis-somain.com
 E-mail : mail@denis-somain.com



*Our group builds capital goods for the industry
 through its three subsidiaries.
 Feel free to contact us!*



www.denis-somain.com
 Sheet metal work
 Survey department
 Mechanical constructions



www.denis-sertac.com
 Designing and implementing
 storage and handling systems
 for loose powdery materials



www.somain-securite.com
 Designing and implementing
 systems to prevent falls from
 heights